

A-957 Series Relay, Automatic Cutout, Rated up to 350 Amps, 28 Vdc

Product Facts

- SPST NO, Double break
- Gasket sealed
- Auxiliary contacts available
- Meets many requirements of MIL-PRF-6106

Performance Data

Electrical Characteristics

Main Contacts —
Contact Arrangement — SPST NO, Double Break
Operating Voltage, Nom. — 28 Vdc
Resistive Rating — 350 Amps
Pickup Current —
 VR — 21-24 V
 I — 25 Amp Max.
 SR — 18 V Max.
 MC — 18 V Max.

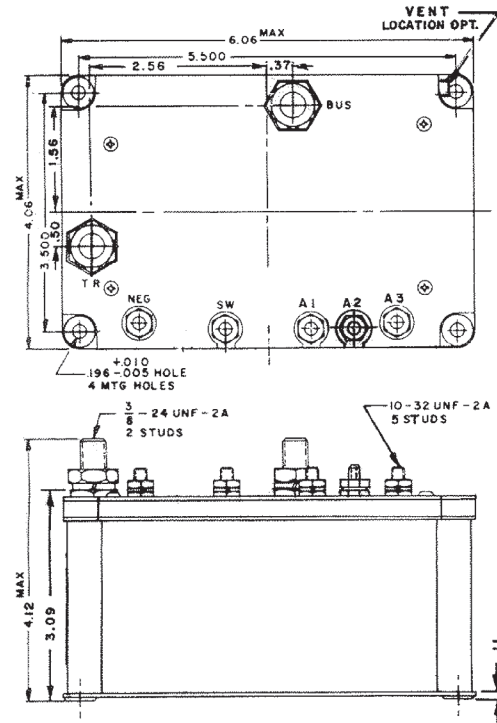
Dropout Current —
 I — 5 Amp Min.
 SR — 18 ± 3 V
 MC — 1 to 7 V

Auxiliary Contacts —
Aux. Contact Arrangement — SPDT
Rated Operating Voltage — 28 Vdc
Resistive Rating — 5 Amps

General Characteristics
Ambient Temperature Range — -30°F to +220°F

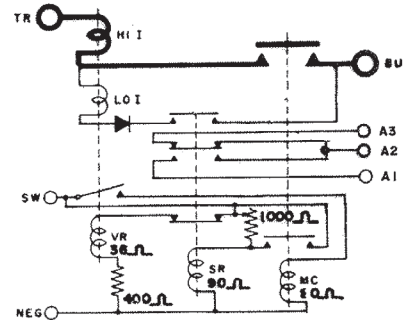
Altitude, Max. — 50,000 ft
Weight, Max. — 4 lbs 8 oz

Coil Characteristics
Duty Cycle — Continuous
Coil Voltage, Nom. — 24 to 30 Vdc



Mounting Style A

Circuit Configurations (Consult factory for other available circuit configurations)



Circuit Configuration 1

For factory-direct application assistance, phone 419-521-9500 or fax 419-526-2749.

| HARTMAN Part Number | Construction Type | Mounting Style | Coil Type | Circuit Config. | TE Part Number |
|---------------------|-------------------|----------------|------------|-----------------|----------------|
| A-957CA | Gasket/Vented | A | Continuous | 1 | 1616110-5 |